

CASE STUDY

 **netwave**  
SEAS OF SOLUTIONS BRAND

 **CWN**  
MARINE

 **AMASUS**

*Eemslift Nadine*

## Amasus Shipping deploys Netwave's Upgrade Kit to modernise vessels VDR System

As a mandated technology, under regulations contained in SOLAS chapter V, a ship's Voyage Data Recorder's (VDR's) dependability is integral to effective fleet management, helping to avoid unplanned scheduling changes to source parts, or service crews for repairs required before the vessel can leave port.

As the legislation was enacted in 2002, many of the original VDR systems were installed almost 20 years ago and many shipping companies are reviewing the most effective ways to retrofit their vessels quickly, economically and efficiently.

Amasus Shipping, who have commercial management of a highly focused fleet of 77 vessels, covering over 4000 voyages a year for their clients, had identified an issue with the VDR of heavy lift cargo vessel Eemslift Nadine. The existing NW4000 VDR had reached its end of life while Eemslift Nadine was at anchorage in Singapore and the system had to be replaced to allow the vessel to return to operations.

In investigating the retrofit options available to replace their existing system, Amasus identified that the new VDR had to meet a number of stringent requirements. Firstly, space limitations meant a new VDR had to occupy the existing footprint or require time consuming and expensive reallocation of multiple systems.

Secondly, the Eemslift Nadine had to be refitted while in port at Singapore, so minimising operational delays through an accelerated installation was critical. Finally, the ship management team wanted the most cost-effective solution which meet the latest regulatory requirements, but also improved the ease of use for the crew.

Jan Klooster, Senior Superintendent at Amasus said, *'The Netwave system was the only solution to meet the vessels operational requirements, while the flexibility of the system allowed us to keep costs to a minimum'*



Pre installation VDR layout

Netwave's new NW6000 Upgrade Kit was designed to facilitate the cost-effective modernising of older maintenance reliant VDR systems. Netwave's process includes, pre-installation survey, a kit comprising of fitting plates to accelerate installation and utilise the existing console space and the reuse of stable components, such as the VGA and DIM modules. Where possible, the option of utilising existing wiring is reviewed with a view to further reducing installation time.

Armed with their in-depth knowledge of the Netwave NW6000 series VDRs innovative solutions, Netherlands based CWN Marine provided a detailed proposal to Amasus, highlighting the installation benefits of upgrading to the latest Netwave model.

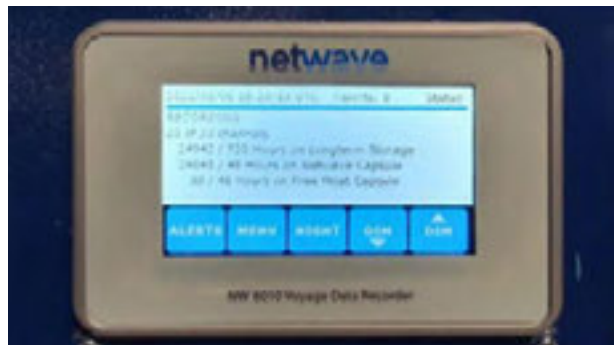
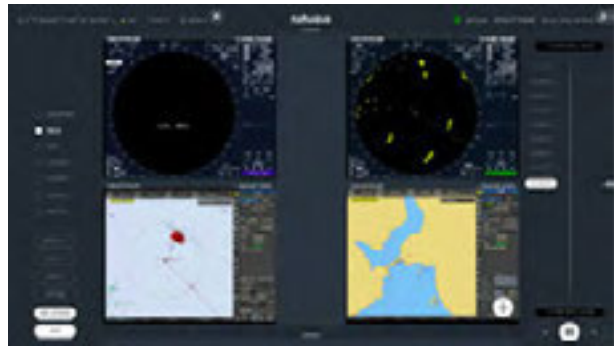
## Kit Installation Benefits

- Utilising Netwave's low profile components, which facilitate reusing Nadine's existing console space - the Netwave Upgrade kit was the only VDR solution available to meet this criteria as it is specifically designed to integrate into the footprint of earlier Rutter and Netwave 4000 designs.



Installed NW6000 occupying previous VDR console

- The ease of upgrading the VDR fixed capsule using the retrofit installation plates. These plates use a pre-bored template that can be used for a wide variety of fittings and greatly reduces the need for welding 'hot work' onboard, helping optimise service engineering time.
- The innovative automatic sensor configuration combined with the ability to copy existing NW4000 configurations to the new NW6000 system, removes a time-consuming installation task.
- The bridge control unit's touch screen allows crew quick access to key sensor information, with comprehensive radar & ECDIS screens, while confirming all channels are recording as configured.



Partnered with Singapore based installation engineers Hostmost, CWN coordinated the VDR upgrade to the Netwave NW6000, with the owners' requirements in mind.

Hostmost highlighted the Netwave Upgrade Kit enabled the project to be completed in under three days. This was the result of greatly reduce hot work during the fitting and, the ease of using the fixed capsule's existing footprint, due to the installation plate.

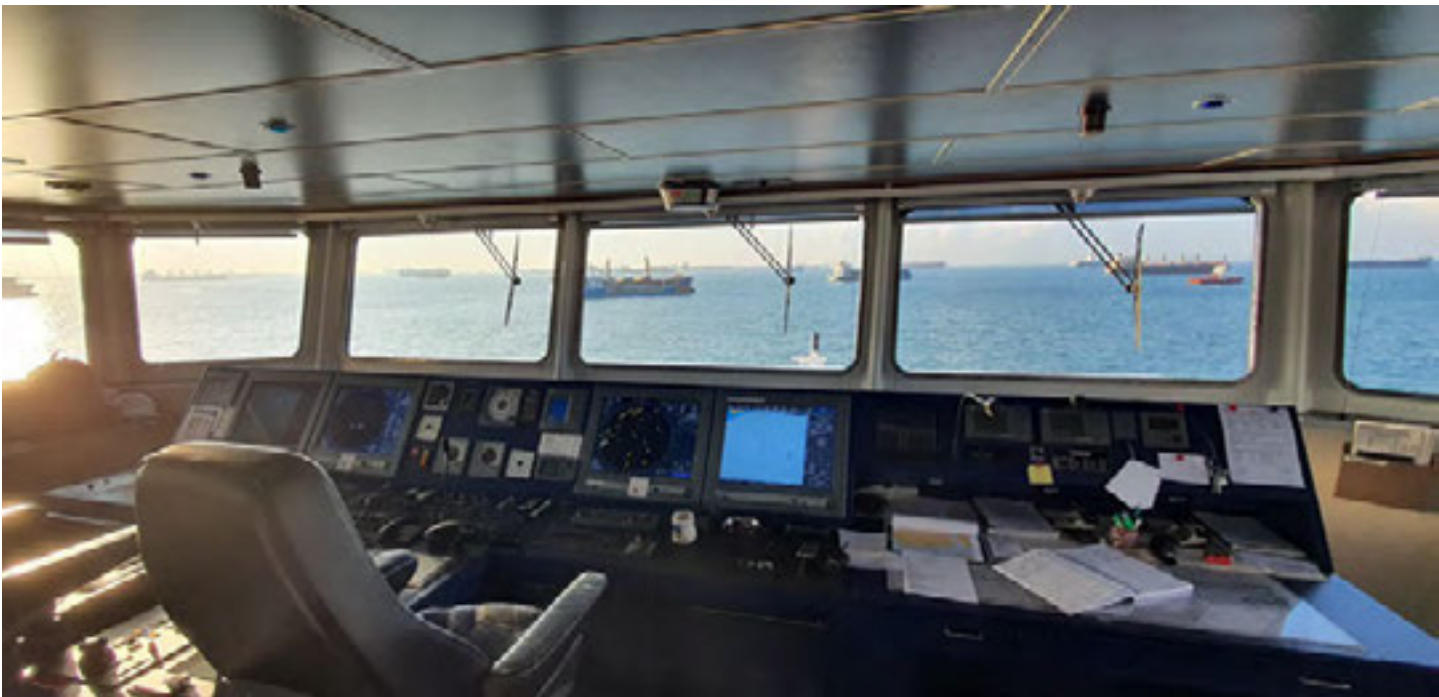


From a budgetary perspective the Netwave Upgrade Kit was the most attractive to Amasus because of the new mechanical and software tools, designed to help service engineers decrease time onboard due to the reduced fitting complexity.

*'By reducing the need for additional system cabling and welding onboard, the Netwave Upgrade kit helped limit operation disruption and accelerate and simplify our VDR retrofit.'*

Jan Klooster

The cost-effective system can incorporate the deployment of existing components, including for the Eemslift Nadine, were the ability to reuse existing microphone wiring and mics from the NW4000 VDR, while **extending the components warranty, further reduced project costs and provided Amasus long term confidence in the solution.**



Bridge Microphone

Designed and manufactured by Netwave in the Netherlands, the NW series is the natural technology upgrade route for NW4000 and Rutter VDRs, as it ensures component compatibility and improves service consistency. Our R&D team have used innovation to help accelerate installation, while providing an economic upgrade path as vessel owners / managers can access the latest NW6000 VDR technology at a reduced cost.